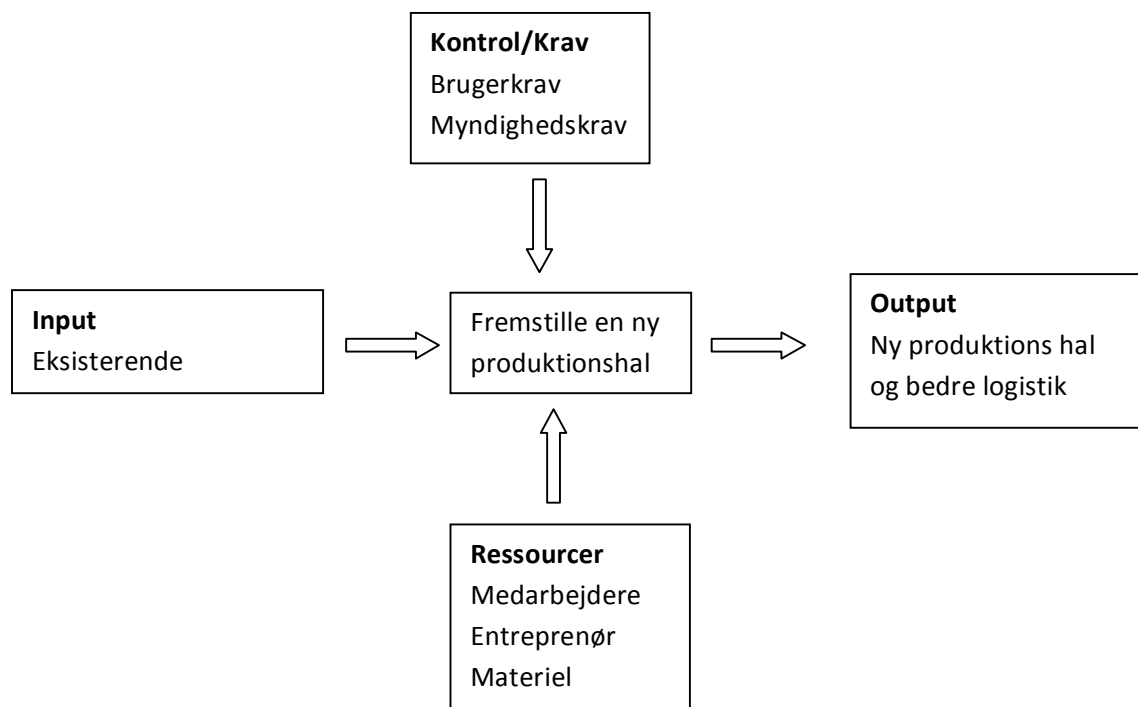


Exercise B on conceptual modelling Gruppe 3.114

In connection with lecture "2. CONCEPTUAL MODELLING" you shall start to develop conceptual models at high abstraction level of your semester 7 project or part of functional system you sketched in exercise A. Also use the figure above to support your choice of system.

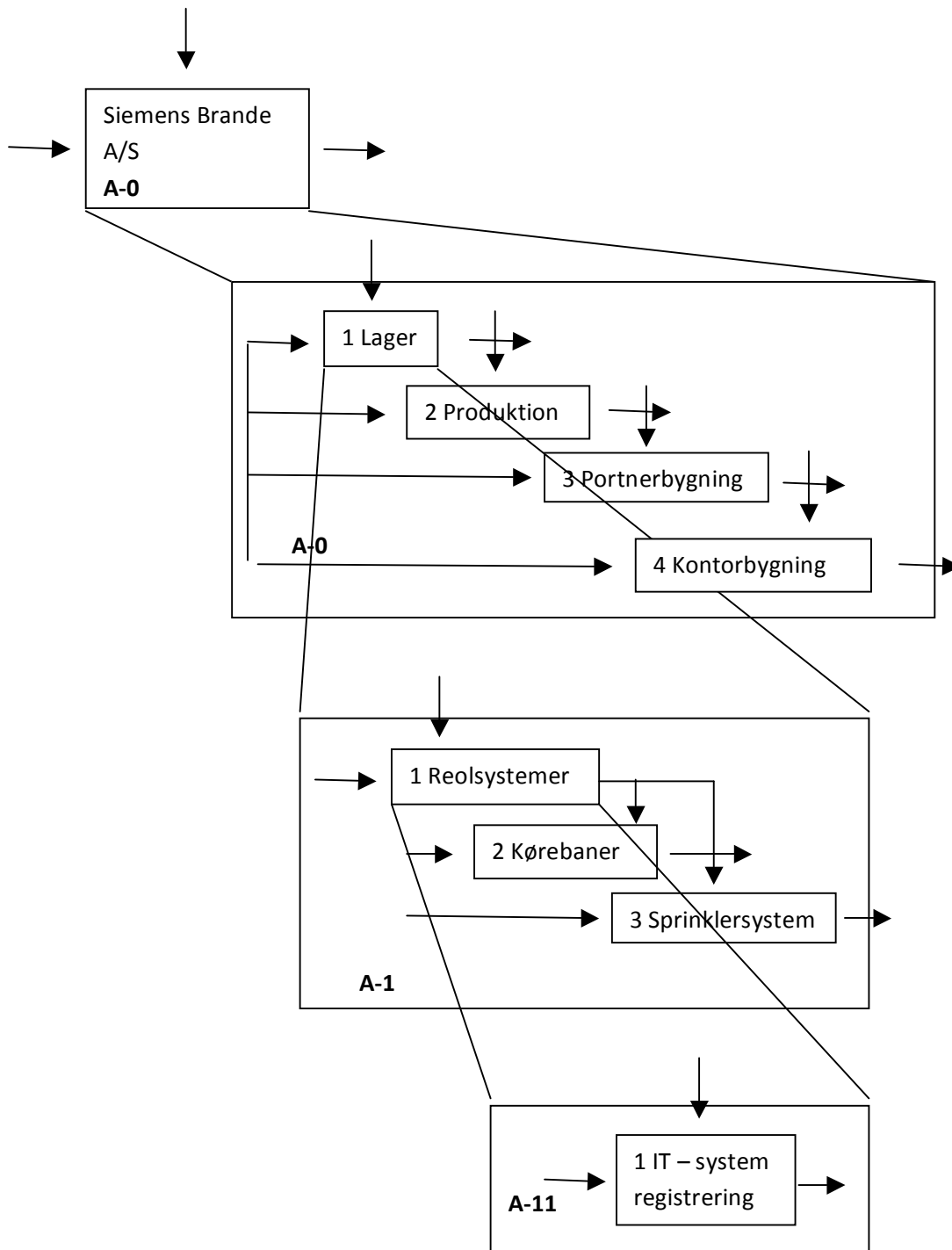
1. Define the overall *function(s)* of the system under consideration. Use initial needs and wishes expressed by the client + Rich picture q.4.



2. Try to give names on the *system* and it's *subsystems*.
Produktionshallen – er det overordnede projekt.

- Lager
 - Kørebaner
 - Reolsystemer
 - IT-system registrering af varer
 - Sprinklersystem
- Produktion
- Portnerbygning
- Kontorbygning

3. Choose the system and subsystems you intend to model, design, and implement.
4. Start the modeling work by drawing *rich picture* conceptual models starting on top level. (som opgave 1)
5. Draw a top level process model using *IDEF0 diagram*.



6. Discuss what *possible UML diagrams* can be constructed during implementation
 - Sequence Diagram – procesregistrering af lagerstyring
 -