

The screenshot shows the RDFedit application window. The title bar reads "RDFedit" and the menu bar includes "RDFedit", "Options", "RDF Tree", and "Info". Below the menu bar, there are several checked options: "rdf:Model&Syntax", "rdfs:Schema", "dc:Dublin Core", "rss:RSS 1.0", "RSS Modules", and "Imported".

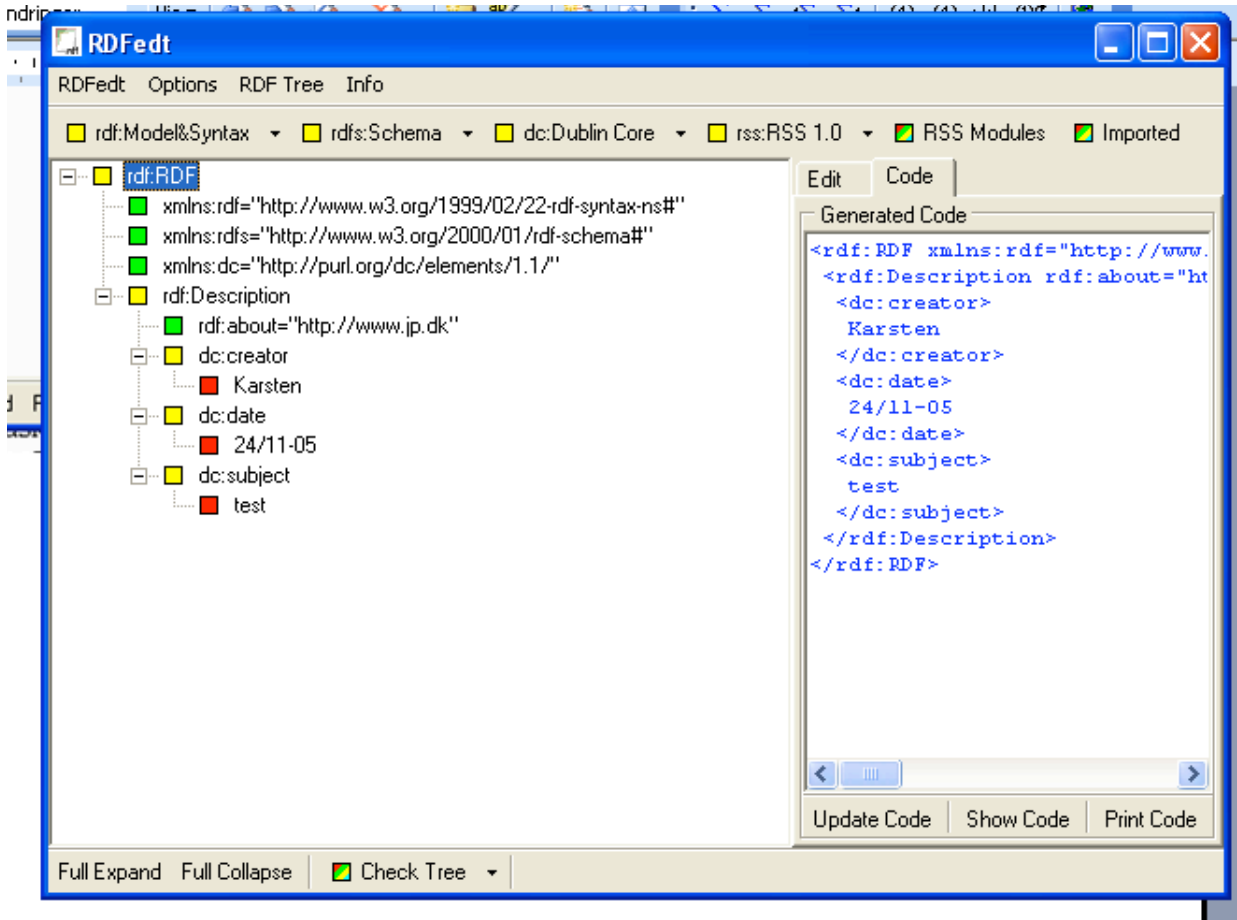
The main area is divided into two panes. The left pane, titled "RDF Tree", shows a hierarchical tree structure:

- rdf:RDF
 - xmlns:rdf="http://www.w3.org/1999/02/22-rdf-syntax-ns#" (green)
 - xmlns:rdfs="http://www.w3.org/2000/01/rdf-schema#" (green)
 - xmlns:dc="http://purl.org/dc/elements/1.1/" (green)
 - rdf:Description
 - rdf:about="http://www.jp.dk" (green)
 - dc:creator
 - Karsten (red)
 - dc:date
 - 24/11-05 (red)
 - dc:subject
 - test (red)

The right pane, titled "Objects", has two tabs: "Edit" and "Code". The "Edit" tab is active and shows:

- Name:** Karsten (in a text input field)
- Type:** Radio buttons for "Element", "Attribut", and "Content". "Content" is selected.
- Legend: Yellow square for Element, Green square for Attribut, Red square for Content.
- Other options: "Comment" (radio button), "minimize Tags" (checkbox).

At the bottom of the window, there are buttons for "Full Expand", "Full Collapse", and "Check Tree".



Online Service

Enter a URI or paste an RDF/XML document into the following text field and a 3-tuple (triple) representation of as well as an optional graphical visualization of the data model will be displayed.

Note: this online service now supports the [RDFCore specifications](#) issued by the [RDF Core Working Group](#). Deprecated elements and attributes of the original [RDF Model and Syntax Specification](#) are no longer supported.

```
<rdf:RDF xmlns:rdf="http://www.w3.org/1999/02/22-rdf-syntax-ns#"
xmlns:rdfs="http://www.w3.org/2000/01/rdf-schema#"
xmlns:dc="http://purl.org/dc/elements/1.1/">
  <rdf:Description rdf:about="http://www.jp.dk">
    <dc:creator>
      Karsten
    </dc:creator>
    <dc:date>
      24/11-05
    </dc:date>
  </rdf:Description>
</rdf:RDF>
```

Parse RDF Restore the original example Clear the textarea

or

Parse URI: Clear the URI

Display Result Options

Triples and/or Graph:

Graph format:

Validation Results

Your RDF document validated successfully.

The original RDF/XML document

```
1: <rdf:RDF xmlns:rdf="http://www.w3.org/1999/02/22-rdf-syntax-ns#" xmlns:rdfs="http://www.w3.org/2000/01/rdf-schema#" xmlns:
2: <rdf:Description rdf:about="http://www.jp.dk">
3:   <dc:creator>
4:     Karsten
5:   </dc:creator>
6:   <dc:date>
7:     24/11-05
8:   </dc:date>
9:   <dc:subject>
10:    test
11:   </dc:subject>
12: </rdf:Description>
13: </rdf:RDF>
14:
```

Graph of the data model

